



**TOP  
DUTCH**  
Naturally leading  
the transition

# WATERTECH

**Discover the TopDutch WaterTech ecosystem:  
offering a complete chain of innovation from  
world-class academic research to accelerated  
global business development.**

**We enjoy an abundance of fresh and mineral water. However, located below sea-level and having a wet climate, in the Netherlands we've also always had a struggle with water, steering us towards innovative water projects. Over the years, we've expanded our expertise from building top-notch water infrastructural projects to keep ourselves safe, to developing the best water quality treatment technologies, serving households and industries across the globe. The knowledge-intensive European water technology hub located in Leeuwarden offers a complete chain of innovation. Today, TopDutch is deepening its focus on R&D and innovation for new technologies, in collaboration with several global water hubs. Here, we test the waters.**


- 1. WaterTech Capital of Europe**
- 3. Access to EU & international markets**
- 5. Access to talent & highly skilled labor**

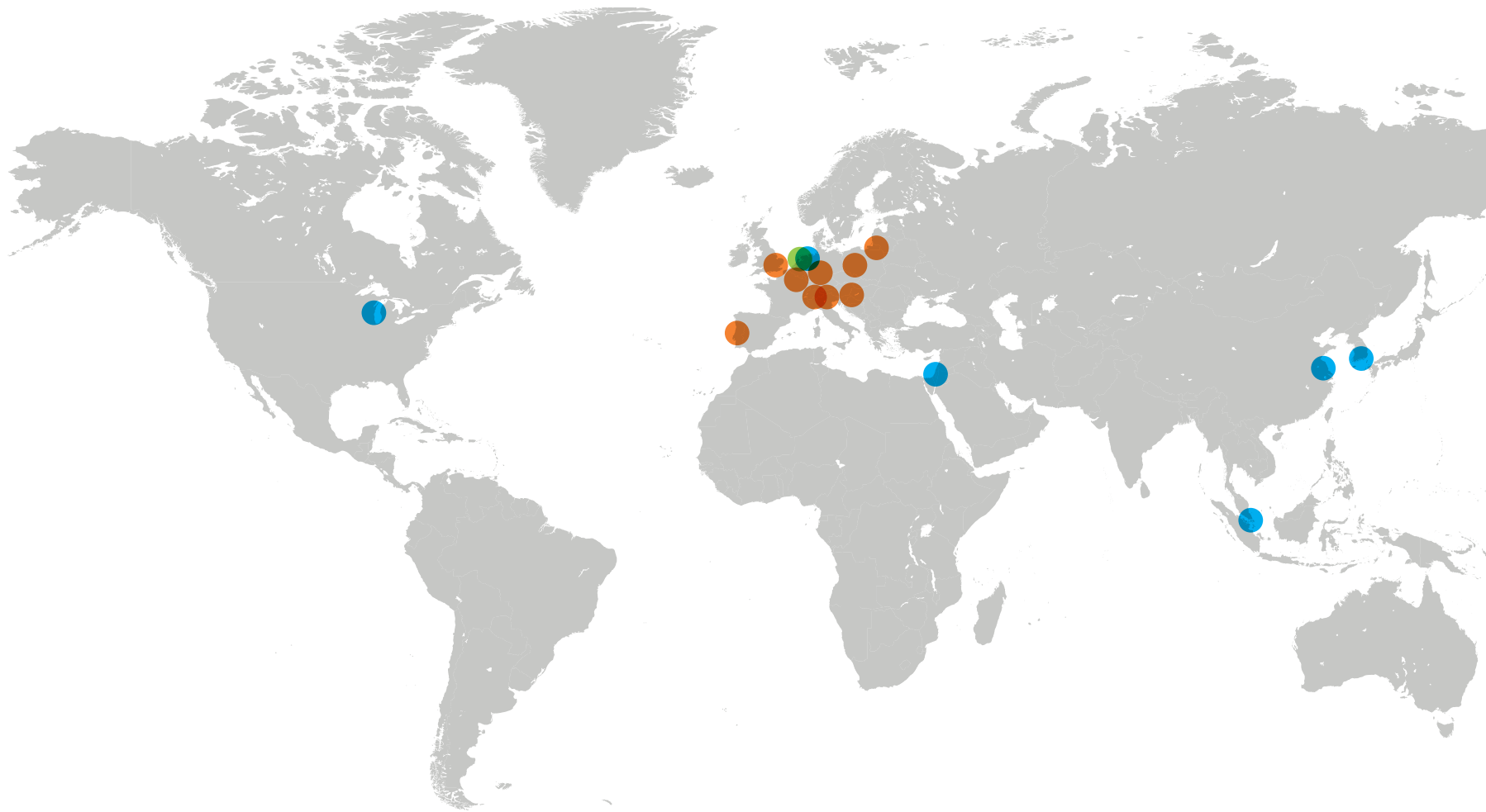
- 2. Complete chain of innovation**
- 4. Breeding ground for technological partnerships**

# 1. WATERTECH CAPITAL OF EUROPE

**The city of Leeuwarden, in the TopDutch region, is the European breeding ground for business and innovation in WaterTech and globally recognized as WaterTech Capital of Europe.**



- 
- **Home to WaterCampus.** WaterCampus Leeuwarden is the European focal point of WaterTech, connecting scientific research, applied research and business. Over 25 companies are based at the WaterCampus itself and the campus is directly connected to over 200 companies.
  - **European node of international water technologies network.** WaterCampus Leeuwarden collaborates with 25 European universities and research institutes and five regions outside of Europe in the Global WaterTech Hub Alliance.
  - **Globally recognized as European Capital of WaterTech.** In September 2018, the Global WaterTech Hub Alliance was established to foster international collaboration between regional hubs of WaterTech innovation. Our European Alliance partner is Water Alliance, the Dutch industry network that, as part of WaterCampus, accelerates innovation and business in sustainable water technologies.





## European node of international WaterTech network

**15**

**Universities /  
research centers**  
in the Netherlands

**10**

**Universities**  
in Europe

**5**

**Global  
Watertech Hub  
Alliance**  
partners

# 2. COMPLETE CHAIN OF INNOVATION

**WaterCampus offers a complete chain of innovation: from science, to applied research and business, all from one attractive business location.**







- **We perform cutting edge scientific research**, spearheaded by science partner Wetsus, the European Center of Excellence for Sustainable Water Technologies.
- **We offer state-of-the-art applied research facilities**, for tests from lab-scale to full-scale units including knowledge and expertise from our universities of applied sciences. The Center of Expertise Water Technology (CEW), supports businesses in the steps from applied science to ready-to-market product development.
- **We have a vibrant business community** brought together in industry network and by managing partner Water Alliance. Water Alliance accelerates business development worldwide.
- **We facilitate, support and connect every single step in the innovation chain**: ideation, fundamental research, developing applications, product testing, marketing and launches, cooperation, international matchmaking opportunities and identifying export opportunities and new market demand - all in one chain.

# A complete chain of innovation

## 1. Market demand

- Direct access to European market via the European Hub location
- Access to international market via Global Water Tech Hub Alliance

## 4. Water Application Center

- 6 applied research themes
- Unique triple helix collaboration
- Four physical facilities available

## 7. Cooperation

- 362 network partners
- 109 international projects
- 5 international hub partners

## 2. Ideas

- World class education & lifelong learning
- Yearly waterSEED challenge
- Two Global WaterTech Hub Alliance challenges
- Pre-seed funding available

## 5. Demo sites

- 4 demo sites

## 8. Matchmaking

- 37 organized events
- 35 international conferences
- 31 received company & 16 trade visits

## 3. Research

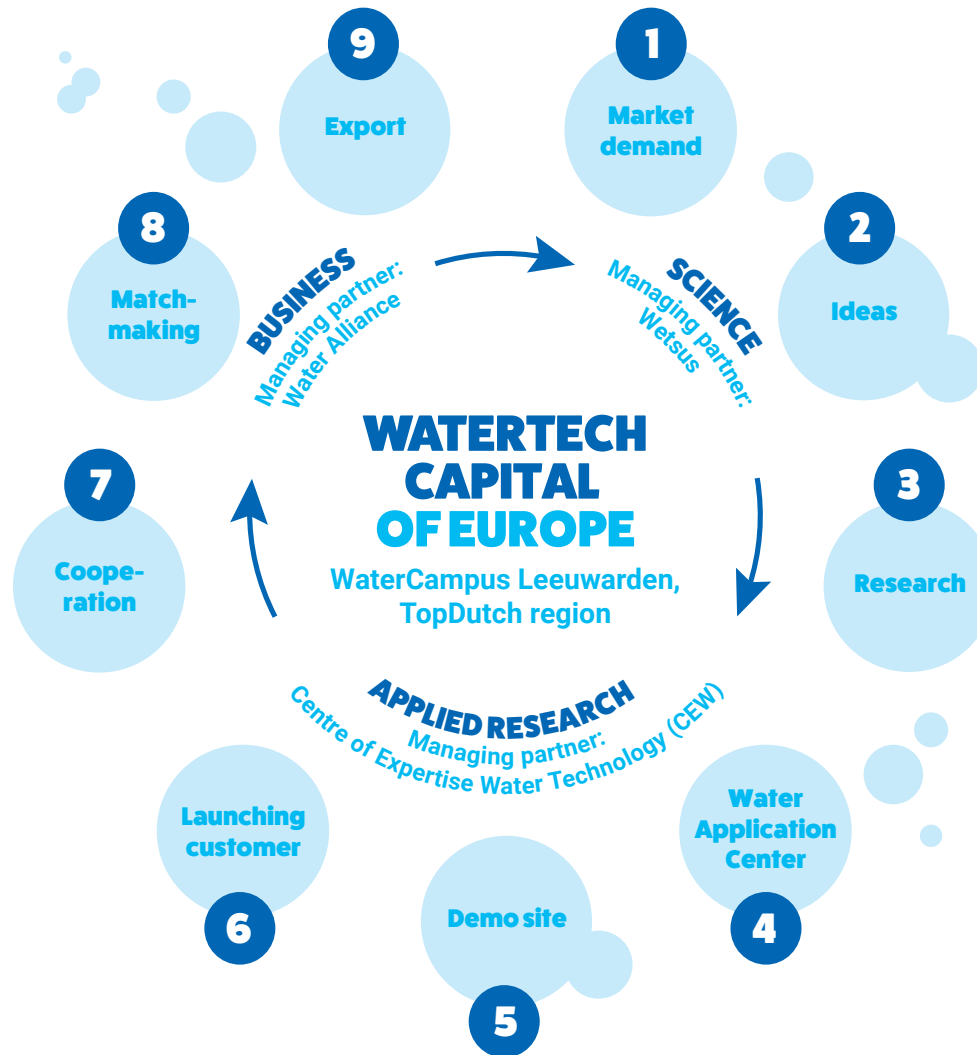
- 24 research themes
- >100 research projects
- 96 patent applications
- 44 spin-offs

## 6. Launching customer

- Launching government
- 3 incubator programs
- 3 business funding partners

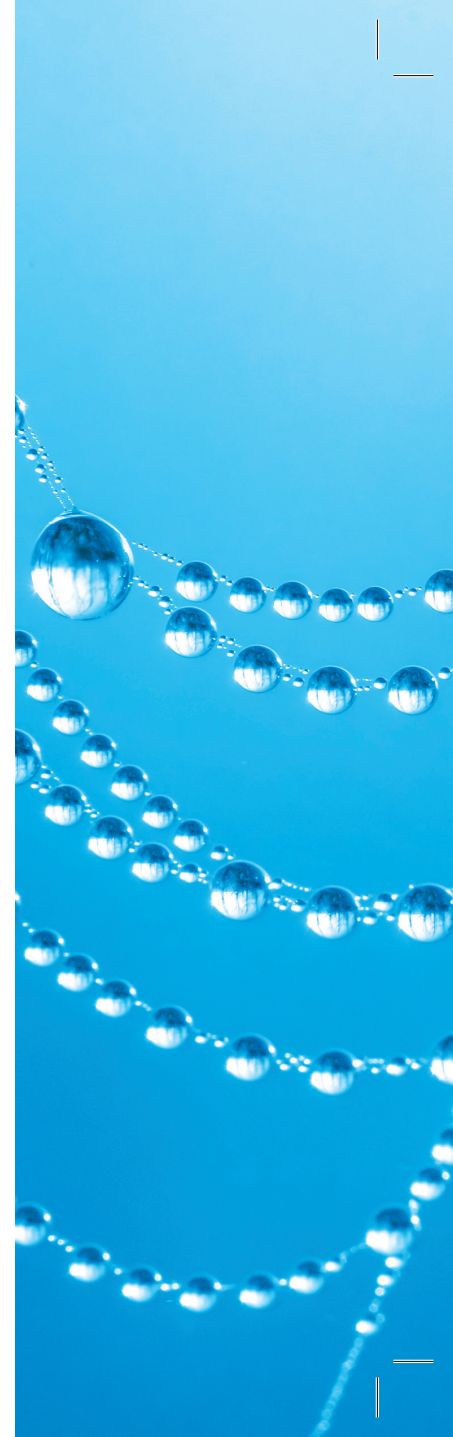
## 9. Export


- 75% companies exporting activities
- Export quote WaterTech: 35-40%



# 3. ACCESS TO EUROPEAN AND INTERNATIONAL MARKETS

We have the **best network to provide you access** to the European and international markets.



- 
- **Connect with European WaterTech partners** via your European business network partner Water Alliance. Water Alliance is one of the international partners in the Enterprise Europe Network (EEN), connecting tens of thousands of European SMEs. The EEN supports SMEs worldwide seeking international collaboration or who are interested in entering new markets.
  - **Connect with global WaterTech partners** via Water Alliance, your European partner in the Global WaterTech Hub Alliance. Water Alliance can provide you with direct access to industry networks of the Global WaterTech Hubs in the US (Milwaukee), Singapore, China (Jiangsu), Israel (Mekorot) and Korea (Daegu).
  - **Explore matchmaking opportunities**, via the many international conferences, visits and other matchmaking events organized, supported or highlighted by the Water Alliance.

# 4. A BREEDING GROUND FOR NEW TECHNOLOGICAL PARTNERSHIPS

**Become technology partner in [turn-key water management solution projects](#); operating globally from the Northern Netherlands.**





● **Partner up with Wetsus in one of its scientific research**

**programs.** Wetsus' research is carried out within the framework of Technological Top Institute for WaterTechnology, part of the Dutch Innovation Program on Water Technology. Leading researchers from various universities work together in the Wetsus laboratory on the following research programs:

- **Sustainable water supply** Focus areas: applied water physics, priority compounds, groundwater technology, biofilms, smart water grids, virus control.
- **Waste water treatment and reuse** Focus areas: advanced water treatment, sulfur, source separated sanitation, concentrates, natural flocculants.
- **Sensing of micro/nano pollutants** Focus areas: sensing, genomics-based water quality monitoring.
- **Reuse of components and production of energy** Focus areas: blue energy, protein from water, phosphate recovery, sustainable carbon cycle, soil, biopolymers from water, resource recovery.
- **New water sources** Focus areas: dehydration, desalination, capacitive deionization, natural water production.







- **Partner up with CEW in one of its applied research or product development tracks.** Develop your first prototype, set up a pilot, accelerate the innovation cycle and shorten your time to market in one of the tracks offered by CEW:

- Saving & Reusing Water.
- Water & Energy.
- Nutrients & Agriculture.
- The Water System.
- Industrial Water.
- Sensor Technology.


- **Partner up with international technology partners via Water Alliance.** Our business network can set up matchmaking activities with the best technology partners in the TopDutch region, in Europe and around the world.

- **Partner up to develop turn-key water management solutions.** Different companies and different industries require a unique mix of highly specialized water technologies to be implemented in their industrial chain in their efforts to realize the most sustainable water system and management. WaterCampus and Water Alliance are the best partners to connect you to technology partners for turn-key water management solution projects.

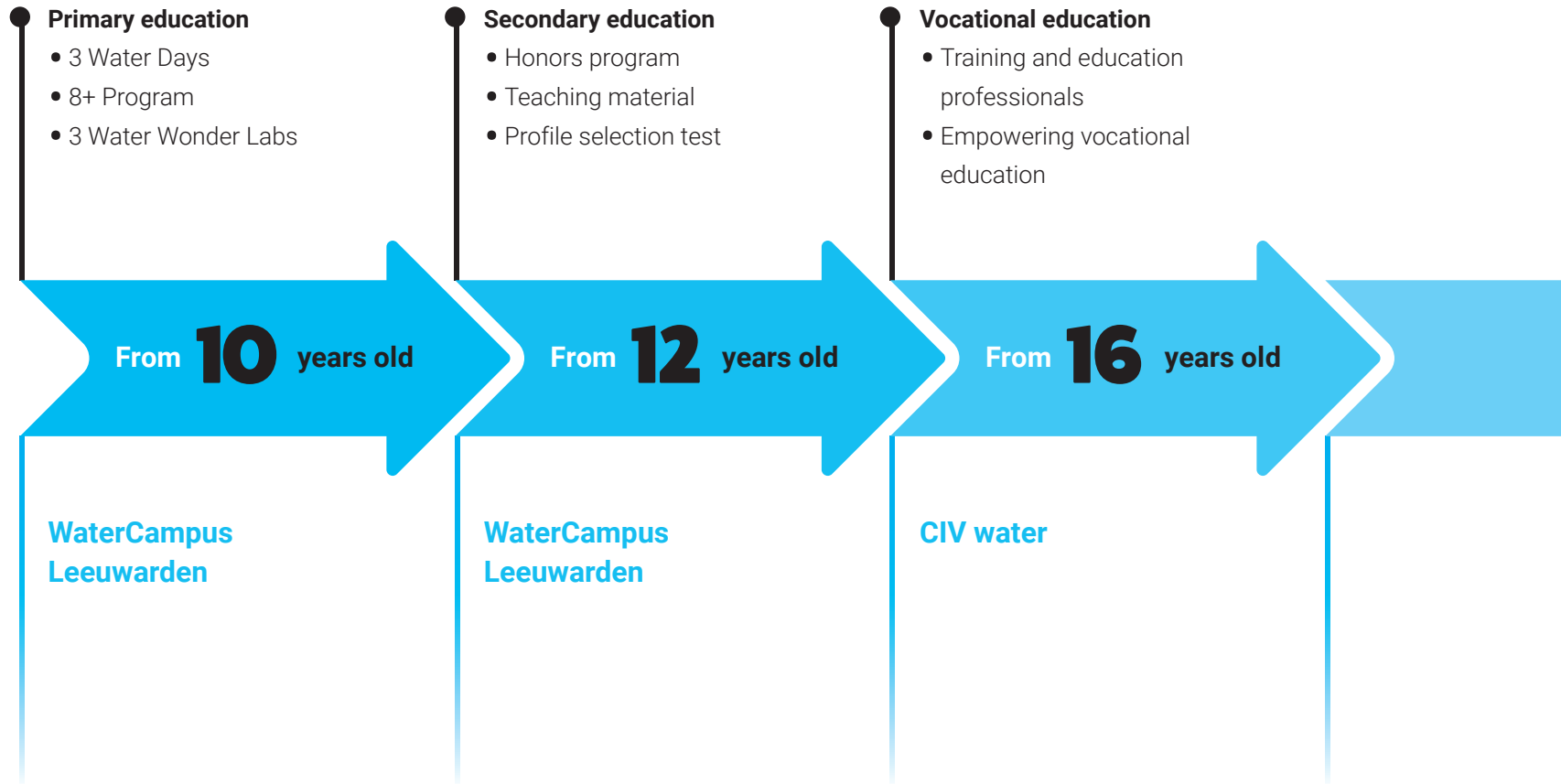
# 5. ACCESS TO TALENT & HIGHLY SKILLED LABOR

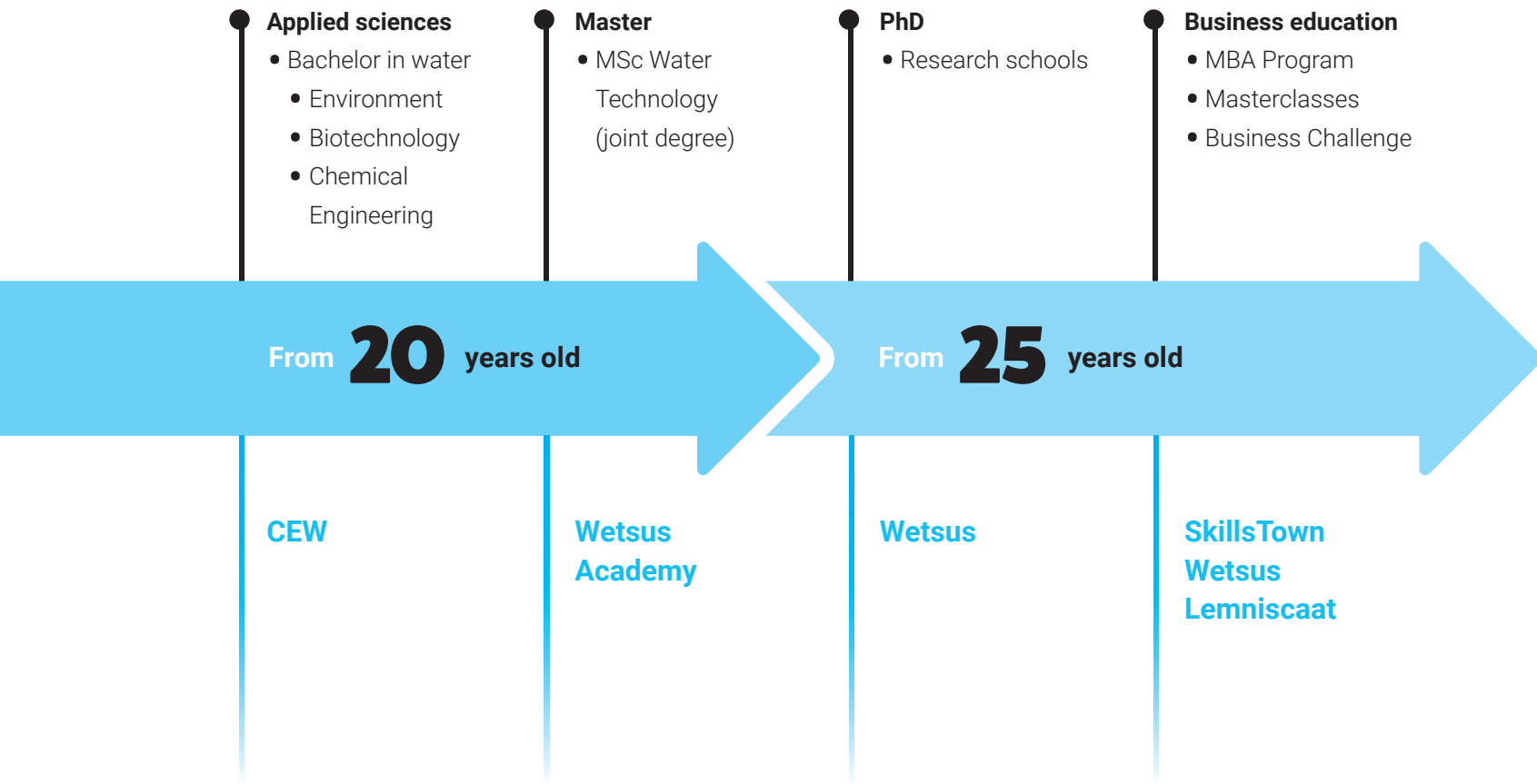
The TopDutch region offers a **lifelong learning program in WaterTech** to develop a highly skilled workforce that enable international companies to **realize their growth ambitions.**



- 
- A young man with short brown hair and black-rimmed glasses is smiling and looking towards a woman on the left. The woman is wearing a white lab coat and blue gloves, and is holding a pipette. They are in a laboratory setting with a microscope visible in the background.
- **Lifelong learning program**, starting at primary education and going up to PhD and MBA level. Unique for the WaterCampus in the TopDutch region is its extensive education program offering education to students at all levels and ages.
  - **Developing highly skilled talent.** Being a highly specialized industry, the WaterTech Capital of Europe produces on average 40 highly and uniquely skilled graduates per year.
  - **Access to talent connected to your growth ambitions via WaterJobs:** the Water Alliance has set up the WaterJobs portal, connecting its industry network companies' growth ambitions with (specialized) talent looking for new challenges. With talent being key to business development, Water Alliance is a supportive partner smoothing the development of your business in the WaterTech industry.

# Lifelong learning program







Are you interested in exploring what  
your business possibilities could be?  
Connect with **Reinder de Jong**,  
our WaterTech expert.

T: +31 6 255 472 73

E: [dejong@nom.nl](mailto:dejong@nom.nl)

## **JOIN TOPDUTCH**

**Want to find out more about how the  
TopDutch region is naturally leading the  
transition, or view the digital edition? Head  
over to our website  
[www.topdutch.com](http://www.topdutch.com)**

## The TopDutch collective:

### Economic region



### Executive partners



### Regional partners



### Knowledge partners



### Industry partners



**TOPDUTCH.COM**

**Naturally leading the transition**